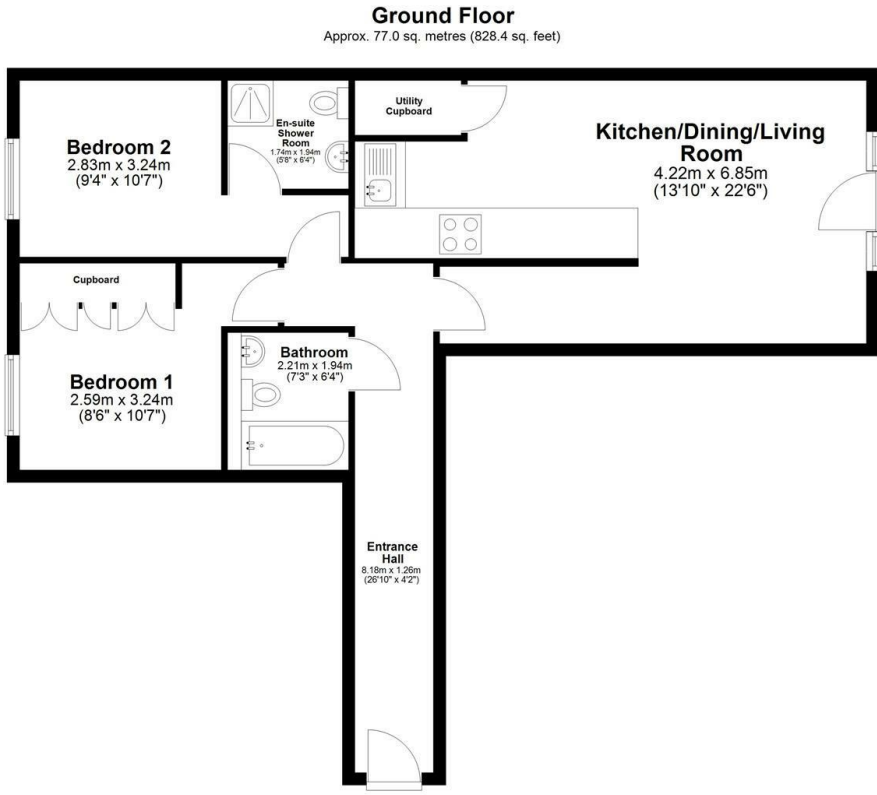




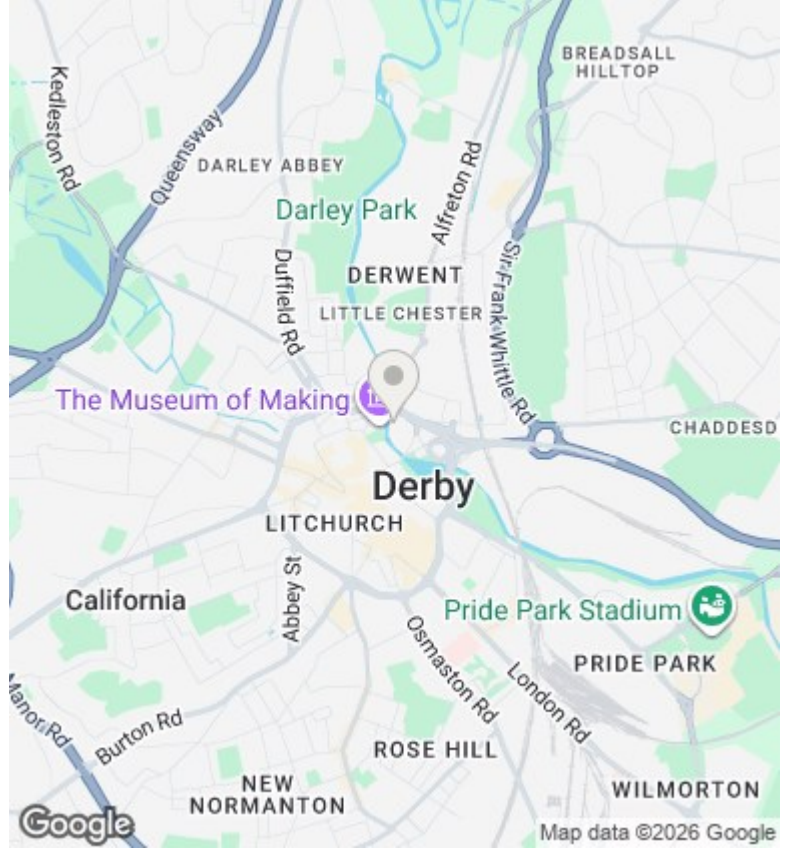
Apartment 2 Riverside, 7 Stuart Street, Derby, DE1 2EB

£800 Per Calendar Month

- First Floor Superior Balcony Apartment
- Large Walkout Balcony
- Spacious Open Plan Living/Dining/Kitchen
- Available Early March
- Two Double Bedrooms
- Lift Access & Secure Intercom
- Integrated Appliances & Fitted Wardrobes
- Ensuite and Family Bathroom
- Secure Gated Allocated Parking
- Part/Fully Furnished Including Crockery and Cutlery



Total area: approx. 77.0 sq. metres (828.4 sq. feet)



Directions

Viewings

Viewings by arrangement only. Call 01332 910111 to make an appointment.

Council Tax Band

B

EPC Rating:

D

Energy Efficiency Rating		
	Current	Potential
<i>Very energy efficient - lower running costs</i>		
(92 plus) A		
(81-91) B		82
(69-80) C		
(55-68) D	62	
(39-54) E		
(21-38) F		
(1-20) G		
<i>Not energy efficient - higher running costs</i>		
England & Wales	EU Directive 2002/91/EC	